

GENERAL SITE NOTES

1. LOOP PLACEMENT IS DEFINED IN TERMS OF WHERE THE VEHICLE ENGINE BLOCK WOULD BE OVER THE LOOP IF THE CENTER OF THE DRIVER'S SIDE WINDOW IS AT THE SERVICE POINT. THE GOAL IS TO ENSURE THERE IS ONLY ROOM FOR ONE VEHICLE BEHIND THE PREVIOUS LOOP AND THE MERGE POINT; THIS IS HOW SEQUENCING IS POSSIBLE.
2. REFER TO ELECTRICAL DRAWINGS FOR FURTHER INFORMATION ON CONDUIT LOCATIONS AND QUANTITY CORRESPONDING TO EACH DRIVE THRU SET UP OPTION.
3. REFER TO SCHEDULE FOR TRAFFIC STRIPING PAINT.
4. G.C. TO PROVIDE FOUNDATION, ANCHOR BOLTS, CAGE, PVC CONDUIT AND ALL RELATED ACCESSORIES PRIOR TO INSTALLATION FOR ALL NEW SITE FIXTURES INCLUDING; SIGNS, LIGHT POLES, CONCRETE PADS, DUMPSTER ENCLOSURES, ETC. SIGN VENDOR TO SUPPLY SIGN FIXTURES.

SITE PLAN KEY NOTES

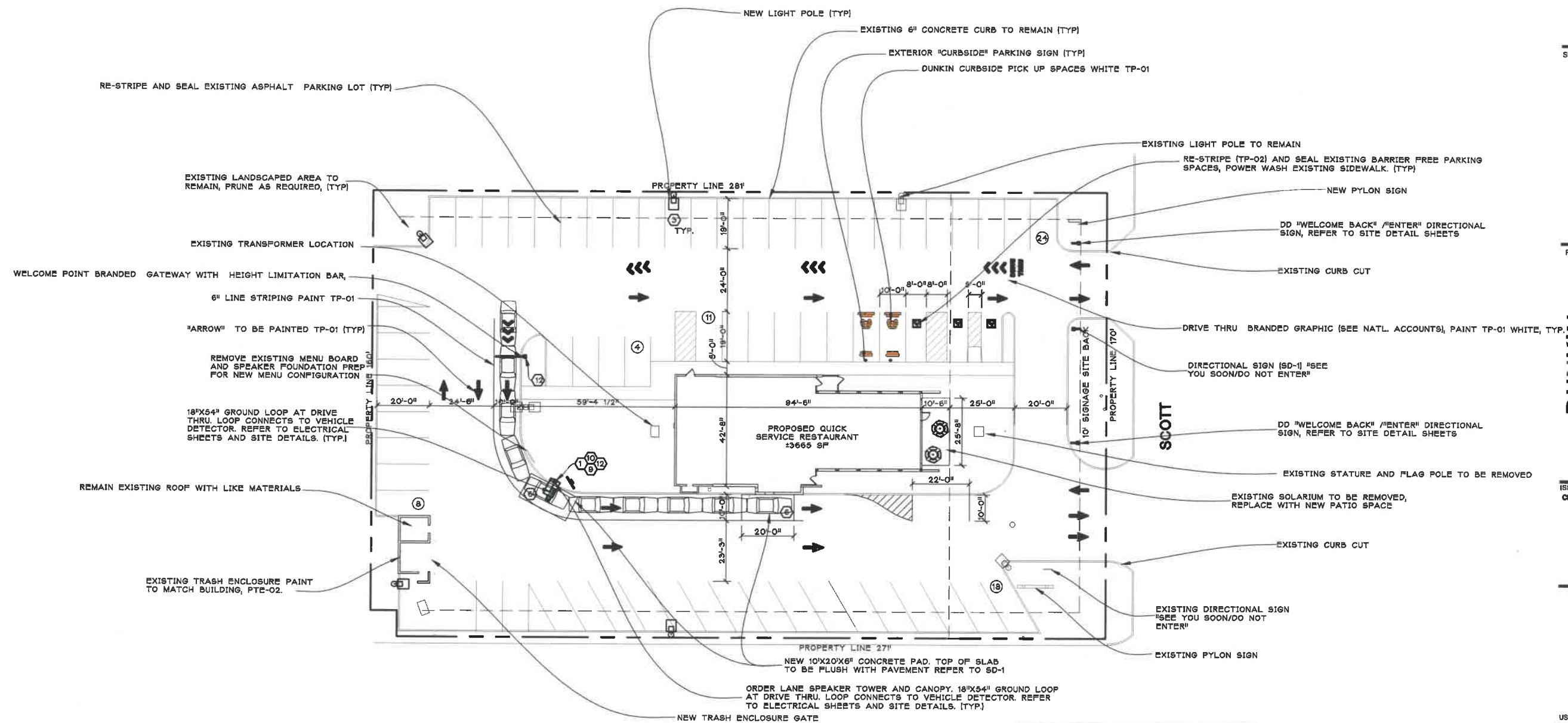
1. LOCATE EXTERIOR MENU SYSTEM AT 6th CAR FROM THE DRIVE THRU WINDOW, PREVIEW BOARD AT 2nd CAR BEHIND. REFER TO SITE PLAN. EXTERIOR MENU SYSTEM TO COMPRISE ORDER SPEAKER TOWER CANOPY, MULTI-PANEL MENU BOARD, 18"x54" GROUND LOOP, AND SAFETY BOLLARD
2. NOT USED.
3. SEE ELECTRICAL SHEETS FOR SITE LIGHTING CRITERIA- PKL4
4. NOT USED
5. NOT USED.
6. CONCRETE PAD AT DRIVE THRU LOOP/DETECTORS SHOULD MATCH THE ADJACENT LOT SURFACE MATERIAL AS MUCH AS POSSIBLE-PROVIDE BLACK STAINED CONCRETE WHEN USED ADJACENT TO ASPHALT MATERIAL.
7. NOT USED
8. NOT USED
9. G.C. TO COORDINATE W/ FRANCHISEE EXACT SIZE OF PAD FOR MENUBOARD, SPEAKER TOWER, CANOPY & ORDER CONFIRMATION BOARD - SEE WEBSITE FOR MOUNTING REQUIREMENTS & FOR COMPLETE INSTALLATION INFORMATION AND DETAILS, <http://extranet.dunkinbrands.com>
10. G.C. TO PROVIDE PVC CONDUIT FOR ALL NEW LOCATIONS, REFER TO ELECTRICAL DRAWING FOR ADDITIONAL INFORMATION ON LOOP REQUIREMENTS; SAW-CUT AT EXISTING LOCATION WHERE NECESSARY (TYP.)
11. NOT USED
12. HOME RUN CONDUIT TO DRIVE THRU TIMER MONITOR ADJACENT TO DRIVE THRU WINDOW.
13. MINIMUM LANE WIDTHS IN JURISDICTIONS WHERE CURBS ARE REQUIRED INBETWEEN LANES. (TYP)

DETAILS OF DEVELOPMENT		
DATA		
PARCEL	1465	
ZONING	C-4 PLANNED COMMERCIAL	
EXISTING USE	QUICK SERVICE RESTAURANT	
TAX DISTRICT		
	REQUIRED	PROVIDED
SETBACKS	FRONT YARD-SCOTT	60'-0"
	SIDE YARD-NORTH	68'-0"
	SIDE YARD-SOUTH	54'-0"
	REAR YARD-	116'-0"
GROSS LOT AREA	47670	
TOTAL ACREAGE	1.1	
LOT COVERAGE		
BUILDING HEIGHT	20'-3"	
SIGN HEIGHT	HEIGHT: 25'-0" AREA: 170*1.5=255 SQ	
PARKING		65 SPACES
HANDICAPPED PARKING	3	3

ARCHITECT:



32316 grand river ave.
suite 200
farmington, mi 48336
248-476-8800
JSCOTTARCHITECTS.COM
copyright © 2020



ARCHITECTURAL SITE PLAN
SCALE: 1" = 20'-0"

G.C. TO PROVIDE PVC CONDUIT FOR ALL NEW SITE FIXTURES, REFER TO ELECTRICAL DRAWINGS FOR ADDITIONAL INFORMATION ON LOOP REQUIREMENTS, SAW CUT AT EXISTING LOCATIONS WHERE NECESSARY

SHEET TITLE:

**ARCHITECTURAL
SITE PLAN**

PROJECT:

DUNKIN
1465 SCOTT ST,
NAPOLEON, OH 43545

ISSUED FOR:
CITY REVIEW 1/27/2022

DO NOT SCALE PRINTS
USE FIGURED DIMENSIONS ONLY
JOB NO.

21174

SHEET NO.

ASP-1

PLOT SIZE: 36"x24"



jeffery a. scott
architects p.c.

32316 grand river ave.
suite 200
farmington, mi 48336
248-476-8800
JSCOTTARCHITECTS.COM

copyright © 2020

SHEET TITLE

EXTERIOR
ELEVATIONS

PROJECT

DUNKIN

1485 SCOTT ST,
NAPOLEON, OH 43545

ISSUED FOR
CITY REVIEW 1/27/2022

DO NOT SCALE PRINTS
USE FIGURED DIMENSIONS ONLY

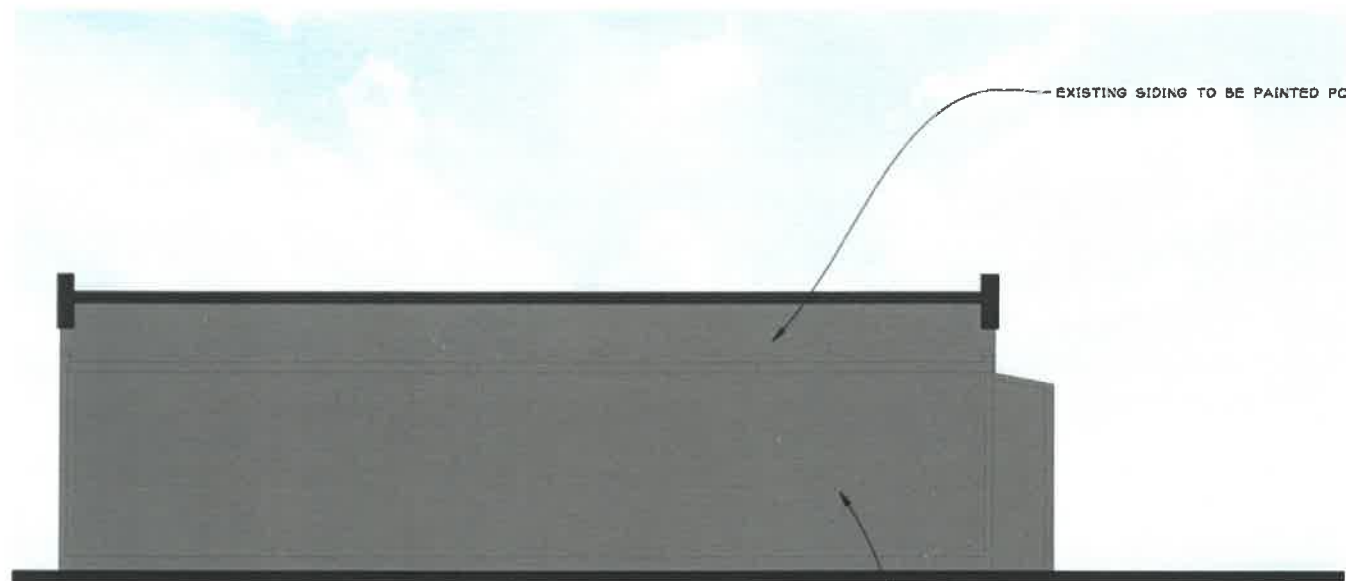
JOB NO

21174

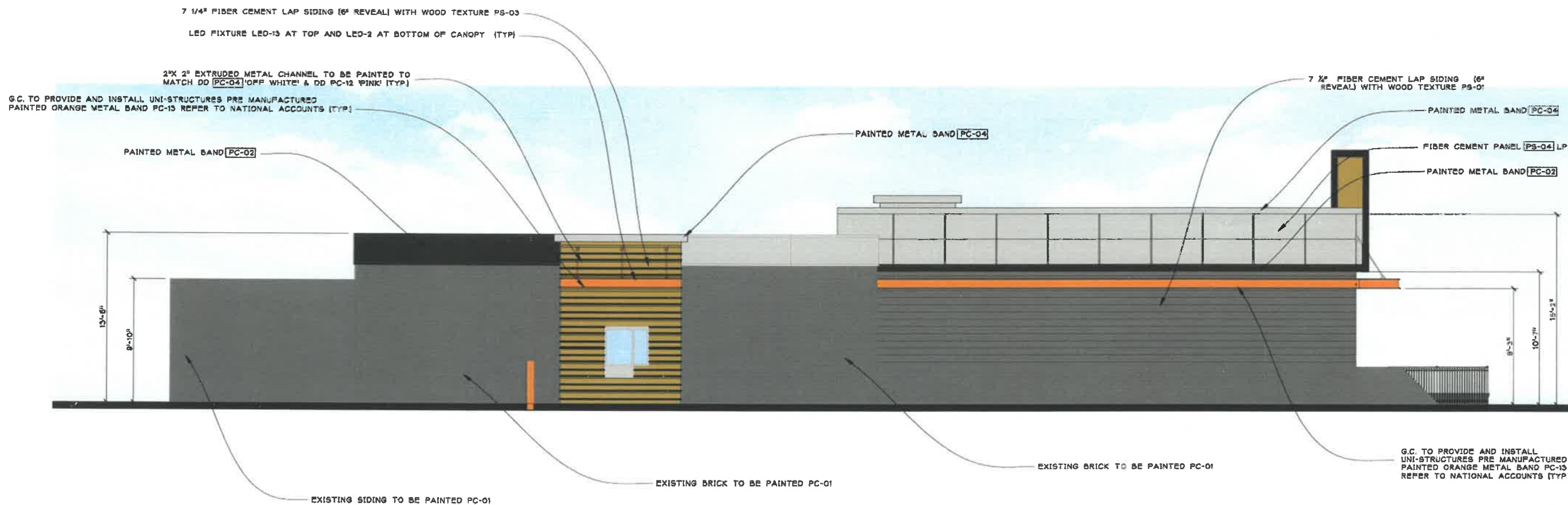
SHEET NO.

A-6

PLOT SIZE 36"x24"



54 WEST ELEVATION
A-6 SCALE: 1/4"=1'-0"



53 SOUTH ELEVATION
A-6 SCALE: 1/4"=1'-0"



jeffery a. scott
architects p.c.

32316 grand river ave.
suite 200
farmington, mi 48336
248-476-8800
JSCOTTARCHITECTS.COM
copyright © 2020

SHEET TITLE

EXTERIOR
ELEVATIONS

PROJECT

DUNKIN

1485 SCOTT ST,
NAPOLEON, OH 43545

ISSUED FOR
CITY REVIEW 1/27/2022

DO NOT SCALE PRINTS
USE FIGURED DIMENSIONS ONLY
JOB NO.

21174

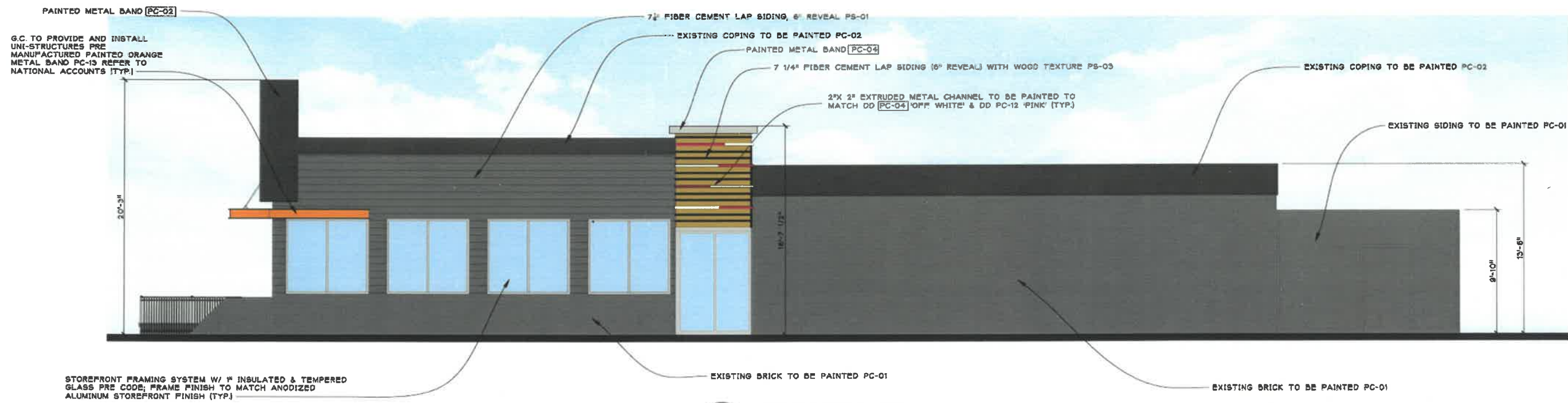
SHEET NO.

A-5

PLOT SIZE 36"x24"



52 EAST ELEVATION
A-5 SCALE 1/4"=1'-0"



51 NORTH ELEVATION
A-5 SCALE 1/4"=1'-0"